

EDM NITI FILE SYSTEM



HyFlex EDM – OGSF Sequence

Take control into your hands

 COLTENE

HyFlex EDM

Outstanding fracture resistant files for safer treatment

HyFlex EDM files have a unique surface and stand out by their durability and high fracture resistance. This is achieved by an innovative manufacturing process using "Electric Discharge Machining" (EDM). In addition, HyFlex files are manufactured from nickel-titanium alloy with **Controlled Memory** heat treatment (CM).

The entirely unique combination of flexibility and fracture resistance makes it possible to reduce the number of HyFlex EDM files required for cleaning and shaping during root canal treatments without having to compromise preservation of the root canal anatomy. Like stainless steel files, the HyFlex EDM files can be pre-bent. This is a crucial advantage in curved root canals to avoid the creation of steps.

Safely regenerable multiple times

Resetting behavior allows visual control after autoclaving and enables multiple use



✓ Ready for safe reuse



✗ Untwisted (discard)

HyFlex EDM NiTi files have a built-in shape memory. They prevent stress during preparation by changing their spiral shape. This change can be quickly reversed by autoclaving to return the instruments to their original shape and resistance to fatigue.

Should the file fail to regain its shape after heating, it is plastically deformed, thus increasing the risk of fracture. It should not be used after visual inspection.



Pre-sterile

Immediately usable



Excellent fracture resistance

Safer treatment thanks to the unique hardened surface



Powerful cutting performance

Allows a smaller number of files for quick preparation



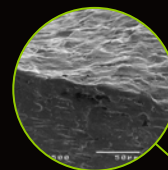
Highly flexible and pre-bendable

Evenly, centered preparation reduces risk of ledging or perforation due to the controlled memory effect



Variable cross-section Design

Contributes to high breakage resistance



Triangular cross-section at top



Trapezoidal cross-section in middle



Quadratic cross-section at tip





OGSF Sequence

The new HyFlex EDM files –
Designed to be used as a sequence

Did you say fast and safe?

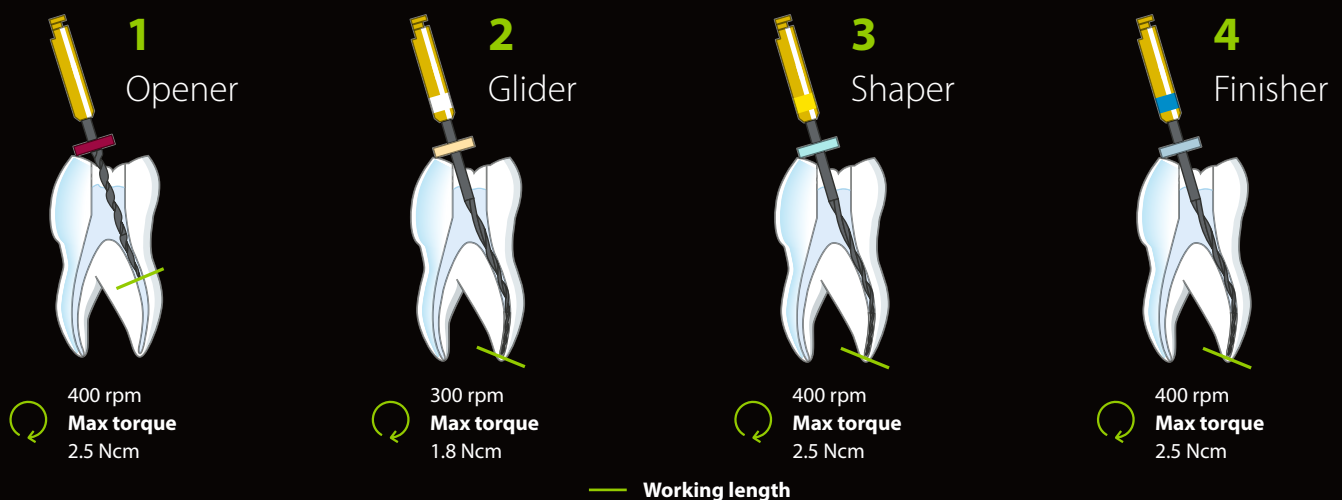
Discover the new sequence solution!

The HyFlex EDM file system offers a tailor-made solution for fast and reliable preparation of simple as well as complex root canal anatomies. Evidence shows that by applying checklists and following standard procedures, reproducibility and safety are increased. Based on this awareness, COLTENE offers new HyFlex EDM files designed to be used as a sequence with one, straight forward protocol.

The new HyFlex EDM OGSF sequence includes a new Orifice Opener and Glidepath file for opening the glide path, as well as a Shaping file for shaping the root canal over the full length. The defined treatment procedure makes the preparation easy and keeps the learning curve short. Due to the optimized match of tip sizes and tapers, designed in cooperation with Prof. Pedullà, the files provide a smooth feeling when shifting from one file to another and help you to keep control over the treatment.

Features and Benefits

- Efficient treatment with high cutting performance
- High fracture resistance and flexibility
- Centered preparation of the canal
- Only one shaping file
- Sterile blister
- 2 lengths: 21 and 25 mm



Order Information

Shaping

HyFlex EDM OGSF Set, 4 pcs	21 mm	25 mm	
OGSF Sequence	60036141	60036142	
HyFlex EDM OGSF Refills, 3 pcs	18 mm	21 mm	25 mm
Orifice Opener 18/.11	60036140	-	-
Glidepath File 15/.03	-	60023493	60023492
Shaping File 18/.045	-	60036136	60036137
Finishing File 30/.04	-	60036138	60036139
HyFlex EDM Finishing File, 3 pcs	21 mm	25 mm	
Finishing File 40/.04	60022271	60019597	
Finishing File 50/.03	60022272	60036598	
Finishing File 60/.02	60022274	60036599	

Drying and Obturation

Size / Taper	HyFlex EDM Paper Points, 100 pcs	HyFlex EDM Guttapercha Points, 60 pcs
30/.04	60036503	60036504
40/.04	60022676	60022708
50/.03	60022741	60022709
60/.02	60022740	60022710



Opener



Shaper



Glider



Finisher

Your Endo Guide

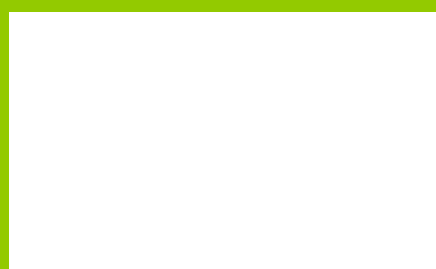
Practical. Innovative. Leading the way.

COLTENE provides simple, safe, and efficient solutions for every step of the endo process, carefully guiding the dentist through every endodontic situation with dedicated training and experienced endo consultants.

Our portfolio, which has been refined over decades, includes innovative consumables and sophisticated equipment that reliably cover all five treatment steps.



© COLTENE – www.coltene.com



Imprint / Publisher

Coltène/Whaledent AG
Feldwiesenstrasse 20
CH-9450 Altstätten
+41 71 757 5300
info.ch@coltene.com

Sales Contact

Coltène/Whaledent Ltd.
The President Suite
Kendal House, Victoria Way
Burgess Hill, West Sussex
RH15 9NF/UK
+44 1444 235486
info.uk@coltene.com

Service Center

service@coltene.com
00 800 11 0000 12 (U/F/N)
Mon.-Fri. 8:00 to 17:00 MESZ

 **COLTENE**